

## Content

Gas strut 222297.....	2 pcs.	Болт М6х16.....	2 pcs.
Fender bracket.....	2 pcs.	Washer 5.....	2 pcs.
Hood bracket.....	2 pcs.	Washer 6.....	2 pcs.
Inside plank .....	2 pcs.	Washer 6 enlarged.....	2 pcs.
Screw M6x20.....	2 pcs.	Installation guide.....	1 pc.
Bolt M5x16.....	2 pcs.		

## Warranty

The warranty period of the product is one year from the date of sale. If no seller's stamp, period of the guarantee starts from the date of assembly of the product.

Warranty replacement is performed by the manufacturer or official dealer.

Note: During winter time, slight lowering of the rigidity of the gas strut might occur due to the properties of gas-filler and not to be considered as a defect.

Hood strut kit for  
Nissan Navara\Pathfinder (2005-2015\2004-2014)

2A.ST.4107.1

## Installation instructions



## Installation



Рис.1

1. Unscrew fender mount bolt using socket wrench №10, (Pic.1).



Рис.2

2. Mount fender bracket, fix it using screw M6x20 with washer 6. Press the bend of bracket to the fender. Tighten screw M6x20 using tool HEX 5mm with torque 9 Nm, (Pic.2).

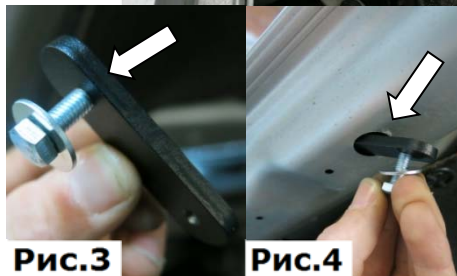


Рис.3



Рис.4

3. Screw bolt M6x16 with washer 6 enlarged into the inside plank for a few revolutions, (Pic.3).

4. Holding the bolt, put the inside plank into the hole in the amplifier of the hood, (Pic.4).

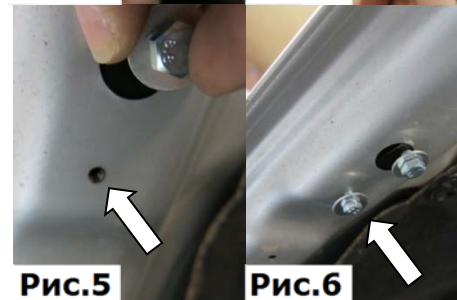


Рис.5



Рис.6

5. Combine the second threaded hole in the inside plank with a hole in the amplifier of the hood, (Pic.5).

6. Screw bolt M5x16 into the inside plank, (Pic.6).



Рис.7

7. Mount hood bracket. Slide the bracket all the way up and to the side (toward engine compartment). Tighten bolt M6x16 using socket wrench №10 with torque 9 Nm. Tighten bolt M5x16 using socket wrench №8 with torque 6 Nm. (Pic.7).



Рис.8

8. Install another attachment same way.

9. Pump the struts (put the strut against hard surface, then press and release it five times).

10. Remove a factory prop rod. Click attachment points of the struts on the hinges. Struts are installed the rod towards the hood. (Pic.8).

11. Smoothly and without jerks not fully close the hood. Ensure the absence of contact of brackets and gas struts with the vehicle parts and body.

12. Ensure that the factory clearances between the hood and fenders are normal. Adjust if necessary.

**ATTENTION: IN WINTER, THE SLIGHT THE LOWERING OF THE RIGIDITY OF THE GAS STRUT, THIS IS DUE TO THE PROPERTIES OF GAS-FILLER**